

Drive: Manual
Release: Remote Electric &
 Local Mechanical
**Security
 Level:** Medium/Maximum

DKR.3 CORRIDOR OPERATOR

Description

Type DKR.3 Operators are medium security, unlocking systems for sliding corridor doors not exceeding 300 pounds.

Applications

DKR.3 Operators may be specified for any corridor or entrance door requiring remote electric unlocking with manual movement of the door to open or closed position.

Functions

Unit unlocks a door from a remotely located control console by push button, and the door starter pushes the door open a few inches. It may then be opened the rest of the distance manually.

Individual doors may be opened by prison paracentric key at the release column.

Locking System

Doors automatically snaplock and deadlock upon closure at two points on the top and bottom rear of the door. Locking components are completely concealed, and not subject to inmate tampering. Components do not project into door opening.

Testing

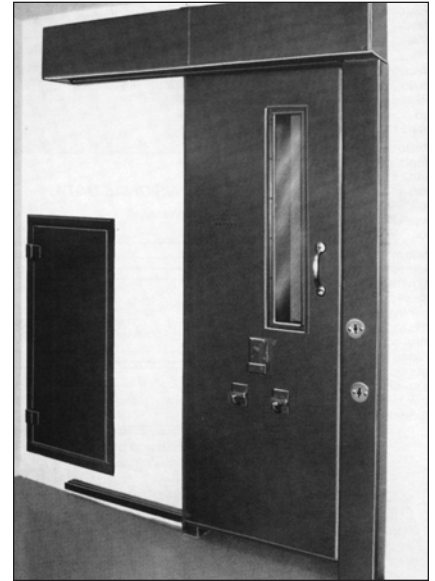
DKR Series Operators have been in service since 1978, and tested to 500,000 cycles.

Standard Features

- **Motor voltage** – 120 VAC.
- **Individual motor operation** – Each door is unlocked by its own motor.
- **Heavy duty construction** – DKR.3 Operators are ruggedly built for the detention environment.
- **Tamper-resistance** – All housing openings are baffled to preclude inmate tampering.
- **Sloped-top housing** – Eliminates hiding of contraband.
Flat-top housing is provided where operator must install close to ceiling.
- **Automatic deadlocking** – Units snaplock and automatically deadlock when closed.
- **Indication switch** – Monitors the deadlocked condition of both locking points.
- **Mechanical release** – A No. 12 Deadlock in the release column provides mechanical unlocking of the mechanism.

Optional Features

- **Key switch operation** – An electrically operated key switch may be added to the release column for local electric operation.
- **Electric controls** – A control console with push button switch, red and green indication lamps, and power cut-off switch may be provided.
- **Interlocking** – Wiring and adaptations may be made to permit interlocking of two or more doors in a sallyport or



vestibule application. Prevents electrical operation of any other interlocked door.

- **Custom graphic consoles** – In many cases, corridor operators are merely one part of a complete security system. For these larger installations, or those with particular needs, custom-built control consoles may easily be provided with floor plan graphics screened on the control panel, and an array of specialized features.
- **G90 galvanized finish available.**

For more information, please call 210.533.1231.



Drive: Manual
Release: Remote Electric & Local Mechanical
Security Level: Medium/Maximum

DKR.3 CORRIDOR OPERATOR

Specifications

■ **Unlocking system –**

Type: Manual.

Motor: 120 VAC, 60 HZ.

Hanger and guides: 1/4" thick steel.

Rollers: Anti-friction ball bearings with hardened members and grease shield.

Finish: USP.

■ **Mechanism housing/covers –**

Housing: 7-gauge steel.

Housing covers: 10-gauge steel.

Vertical lock column housing: 7-gauge steel.

Vertical lock column cover: 10-gauge steel.

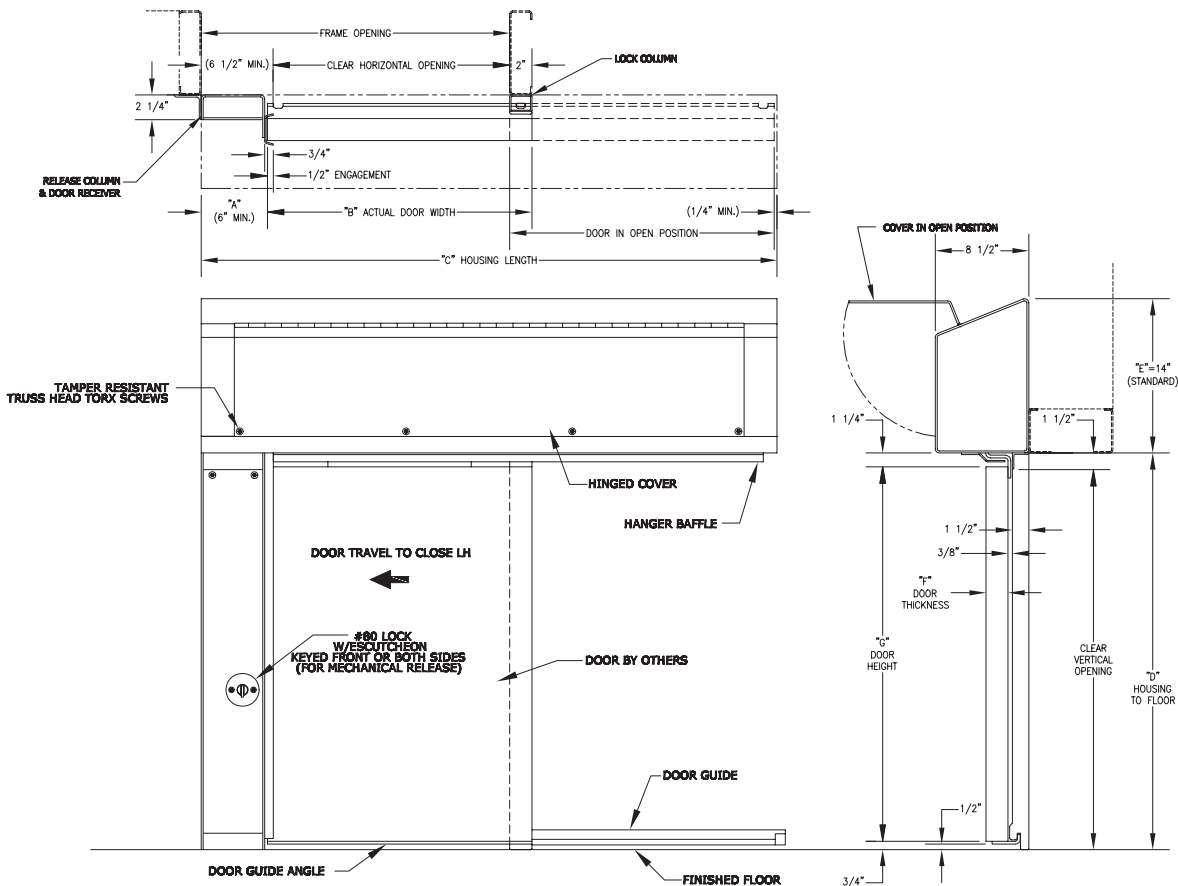
Mechanical release column: 7-gauge steel with 10-gauge steel front receiver.

Finish: USP.

Dimensional Data

Note: Dimensions are for information and planning purposes only, and should not be used as templates.

The illustration shown is intended for general information and planning purposes only. Folger Adam locking devices are fabricated to the design of the facility.



TYPICAL DKR.3 SLOPE-TOP ELEVATION
LEFT HAND (LH) AS SHOWN
RIGHT HAND (RH) OPPOSITE AS SHOWN



P.O. Box 2021, San Antonio, TX 78297 ■ Ph: 210.533.1231 ■ Fx: 210.533.2211
 Web: www.SouthernFolger.com ■ Email: info@southernfolger.com