

Drive: Roller Chain
Release: Remote Electric,
Local Mechanical
**Security
Level:** Maximum

D CORRIDOR DOOR OPERATOR

Description

Type D Operators are high security, motorized door operating systems for use with doors weighing up to 450 pounds.

NOTE: Units may be adapted to operate doors up to 1,000 pounds

Applications

Type D Operators should be specified for entrances, security vestibules, or corridor doors in maximum security areas. May also be specified for exterior pedestrian gate applications.

Functions

Unit unlocks, opens and locks open; or unlocks, closes and deadlocks closed, an individual door.

Movement of a door may be stopped in mid-travel to reverse its direction. When interrupted, the door is not free-wheeling.

Interlocking: Any door not closed and deadlocked will also prevent electric operation of all other interlocked doors.

Manual emergency locking, unlocking and operation is accomplished by a clutch release and crank located in the locking column.

Locking System

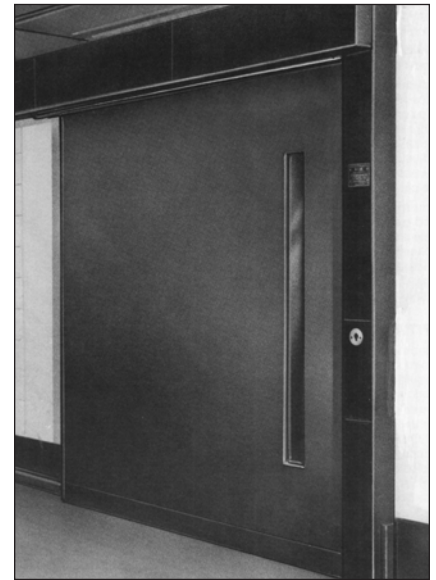
The door automatically deadlocks closed at two concealed points at the rear edge of the door. Locking components are not exposed at the front edge of the door and, therefore, not subject to tampering. No components project into the door opening.

Testing

Type D Operators have been in service since 1949, and tested to 500,000 cycles.

Standard Features

- **Motor voltage** – 208 VAC.
- **Rugged chain drive** – Provides consistent action of the door under a variety of conditions and installation variables.
- **Heavy duty construction** – Type D Operators are ruggedly built for a range of detention environments.
- **Tamper-resistance** – All openings in housings are baffled to preclude inmate tampering.
- **Sloped-top housing** – Resists hiding of contraband.
Flat-top housing is provided where operator must install close to ceiling.
- **Automatic deadlocking** – Doors automatically deadlock at two concealed points at the rear of the door on closure.
- **Indication switch** – An internal switch monitors deadlocked condition of both locking points
- **Terminal strip** – All internal components are pre-wired to a terminal strip. The strip is also used for ease of field wiring.
- **Adjustable friction clutch** – In case of door blockage, clutch slips until obstruction is removed. If not removed, power to the motor is cut to avoid damage. Adjustment is provided to compensate for various sizes and weights of doors.



- **Emergency manual unlocking and operation** – In event of power failure, unlocking the column provides access to the release mechanism. The door may then be operated by hand crank.
- **G90 galvanized finish.**

Optional Features

- **Electrical control cabinet** – Control cabinets may be furnished to house all wiring and switches for each door controlled. Three push buttons are provided for each door, labeled: OPEN-CLOSE-STOP. Two indicator lamps above the push buttons indicate door position:
Red – OPEN.
Green – CLOSED and deadlocked.

For more information, please call 210.533.1231.



Drive: Roller Chain
Release: Remote Electric, Local Mechanical
Security Level: Maximum

D CORRIDOR DOOR OPERATOR

- **Electrical interlocking** – Wiring and adaptations may be made to permit interlocking of two or more doors in a sallyport or vestibule application. Prevents electric operation of any other interlocked door.
- **Custom graphic consoles** – In many cases, corridor operators are merely one part of a complete security system. For larger installations, or those with particular needs, custom-built control consoles may be easily provided with floor plan graphics screened on the control panel, and an array of specialized features.
- **Tandem wheel assemblies** for doors over 500 lbs. or excess width.

Specifications

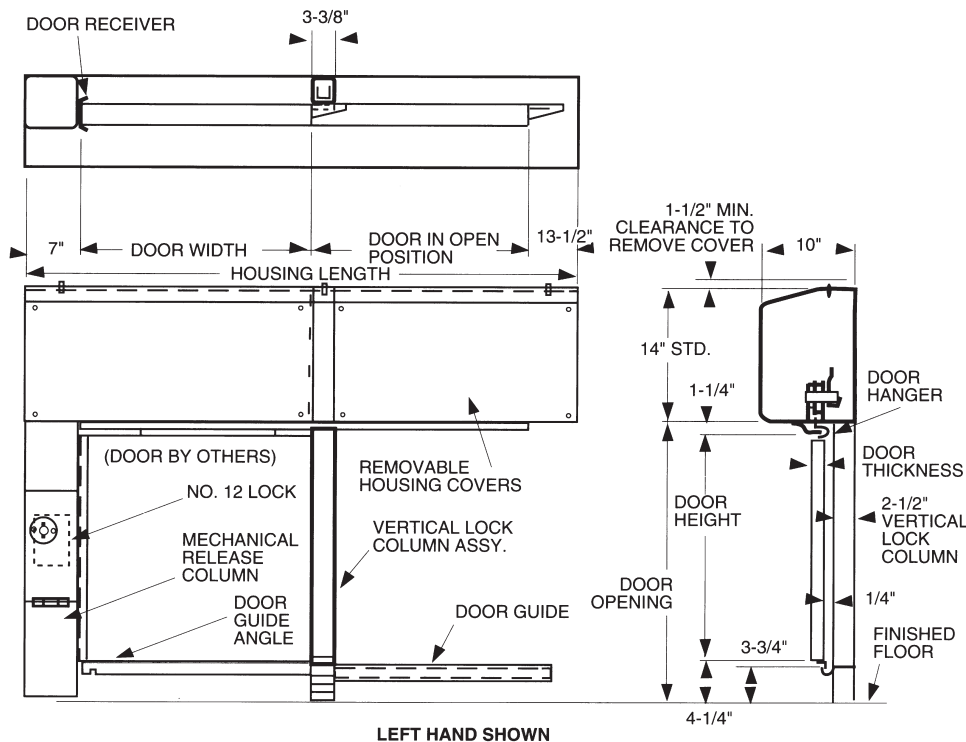
- **Drive system** –
Type: Roller chain.
Motor: 208 VAC, 60 HZ, 1/4 HP.
Roller chain: #41 size.
Hanger and guides: 1/4" thick steel.
Rollers: Anti-friction ball bearing with hardened members and grease shield.
Roller studs: High alloy steel with self-locking nut.
Finish: USP.

- **Mechanism housing/covers** –
Housing: 7-gauge steel.
Housing covers: 10-gauge steel.
Vertical lock column housing: 7-gauge steel.
Vertical lock column covers: 10-gauge steel.
Mechanical release column: 7-gauge steel.
Front receiver: 10-gauge steel.

Dimensional Data

Note: Dimensions are for information and planning purposes only, and should not be used as templates.

The illustration shown is intended for general information and planning purposes only. Folger Adam locking devices are fabricated to the design of the facility.



P.O. Box 2021, San Antonio, TX 78297 ■ Ph: 210.533.1231 ■ Fx: 210.533.2211
 Web: www.SouthernFolger.com ■ Email: info@southernfolger.com