

DOOR MOUNTED FOR SMALL SWINGING DOORS

Maximum security.

1010A DEADLOCK

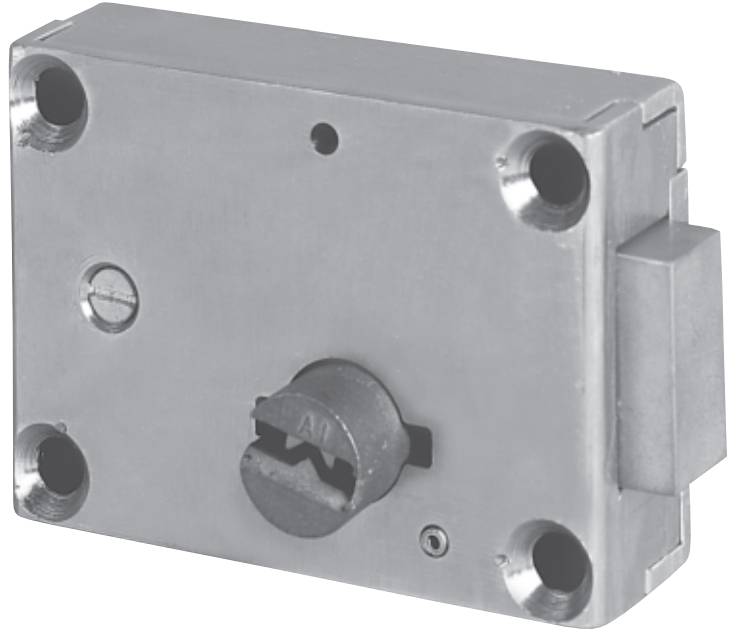
1010A-1: KEYED ONE SIDE
1010A-2: KEYED BOTH SIDES

APPLICATION:

For small swinging doors on access panels, plumbing chases, control cabinets, etc.

FUNCTION:

Key activated locking and unlocking.



DOOR MOUNTED FOR SMALL SWINGING DOORS

Maximum security.

STANDARD FEATURES:

- Mechanical deadlock
- Six heavy-duty tumblers
- Mounting fasteners

OPTIONAL FEATURES:

EXTENDED BOLT - Used for stop side mounting. Specify "1-1/4".

HOLLOW METAL MOUNTING - Used for hollow metal door application. Specify "HM." (See page G17)

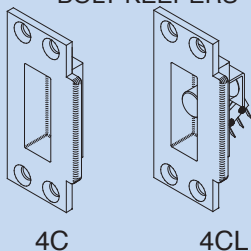
GRATING DOOR MOUNTING - Used for grating door application. Specify "G." (See page G17)

PLATE DOOR MOUNTING - Used for steel plate door application. Specify "P." (See page G17)

BOLT KEEPER OPTIONS - (Must be specified separately):
4C - Bolt keeper with dustbox
4CL - Bolt keeper with switch

NOTE: All bolt keepers are supplied with security fasteners.

BOLT KEEPERS



4C

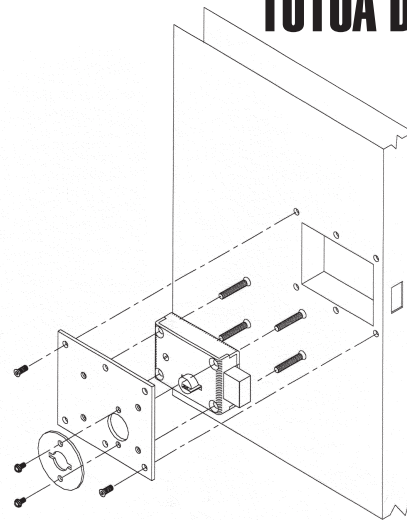
4CL

HOW TO ORDER:

Specify:

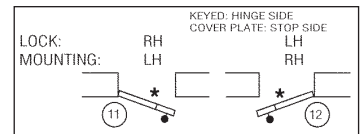
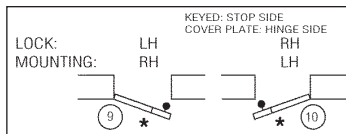
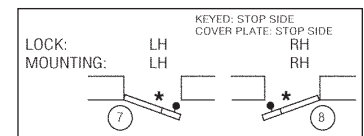
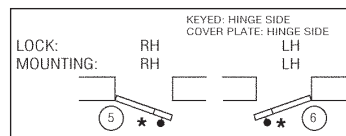
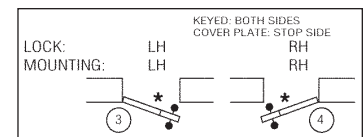
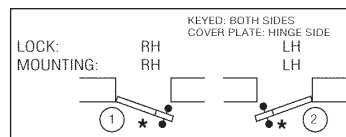
1. Quantity
2. Swing chart number (handing)
3. Bolt projection
4. Application (HM, G, P)
5. Key code instruction
6. Bolt keeper requirements

1010A DEADLOCK



HM Mounting Shown

Swing Chart: Specify circled swing number when ordering.



* Indicates lock mounting/access plate side.

TECHNICAL DATA:

- **STANDARD FINISH:** Galvanized
- **COVER:** Steel
- **CASE:** Steel
- **LOCKBOLT:** Steel
- **PARACENTRIC CYLINDER:** Silicon bronze/copper alloy
- **TUMBLERS:** Spring tempered brass. Tumblers actuated by phosphor bronze springs, six tumblers per lock
- **LOCK SIZE:** 4.4" L x 3.15" H x 1.35" TK
- **LOCK WEIGHT:** 4.5 lbs.
- **LOCKBOLT SIZE:** 1-1/2" H x 3/4" TK
- **LOCKBOLT THROW:** 5/8"
- **ASTM F1577 Certified Impact Test-Grade 1**

