

DOOR MOUNTED FOR SWINGING DOORS

Maximum security.

1080A DEADLOCK

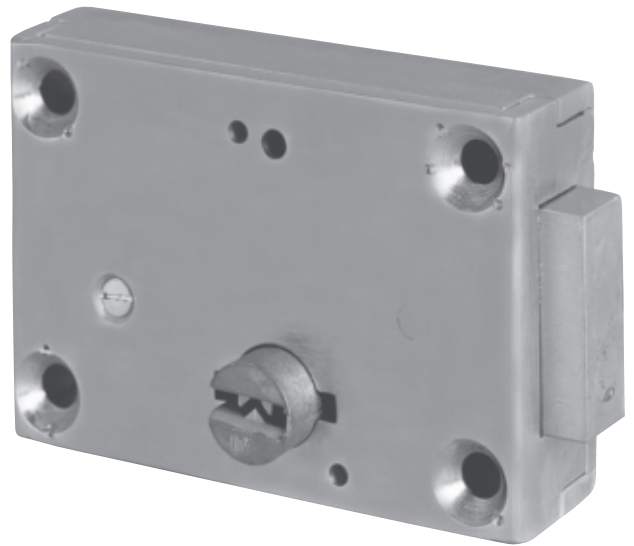
1080A-1: KEYED ONE SIDE
1080A-2: KEYED BOTH SIDES

APPLICATION:

For swinging cell, corridor, storage room and high security doors where slamlocking is not required.

FUNCTION:

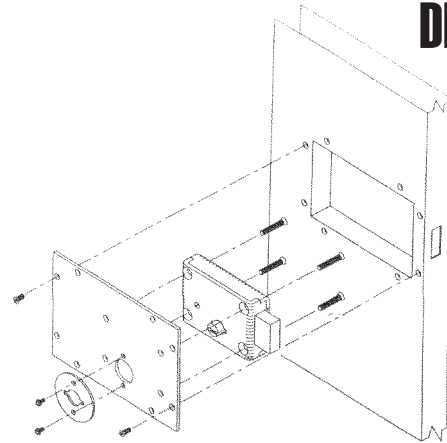
Key activated locking and unlocking. Deadlocks in both locked and unlocked position.



DOOR MOUNTED FOR SWINGING DOORS

Maximum security.

1080A DEADLOCK



HM Mounting Shown

STANDARD FEATURES:

- Manual deadlock
- Six heavy-duty tumblers
- Mounting fasteners

OPTIONAL FEATURES:

DEADLOCK INDICATION - Directional arrow indicates if lockbolt is extended or retracted. Specify "SD".

1080ASD-1 Keyed one side

1080ASD-2 Keyed both sides

EXTENDED BOLT - Used for stop side mounting. Specify "1-1/4".

HOLLOW METAL MOUNTING - Used for hollow metal door application. Specify "HM." (See page F17)

GRATING DOOR MOUNTING - Used for grating door application. Specify "G." (See page F17)

PLATE DOOR MOUNTING - Used for steel plate door application. Specify "P." (See page F17)

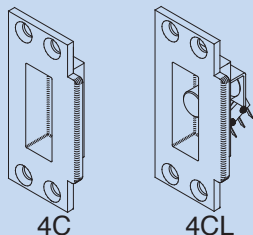
BOLT KEEPER OPTIONS - (Must be specified separately):

4C - Bolt keeper with dustbox

4CL - Bolt keeper with switch

NOTE: Keepers supplied with security fasteners.

BOLT KEEPERS/STRIKES



4C

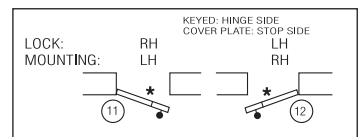
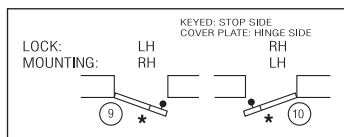
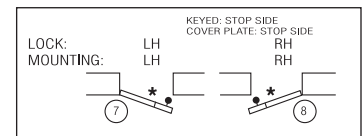
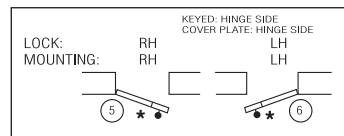
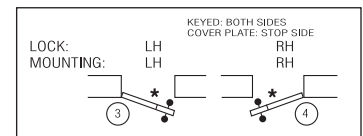
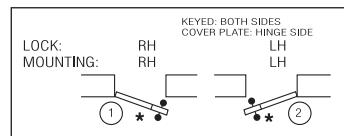
4CL

HOW TO ORDER:

Specify:

1. Quantity
2. Swing chart number (handing)
3. Bolt projection
4. Application (HM, G, P)
5. Key code instruction
6. Bolt keeper requirements

Swing Chart: Specify circled swing number when ordering.



* Indicates lock mounting/access plate side.

TECHNICAL DATA:

- **STANDARD FINISH:** Galvanized
- **COVER:** Steel
- **CASE:** Steel
- **LOCKBOLT:** Cold-rolled steel with (3) 1/4" diameter case-hardened steel insert pins
- **PARACENTRIC CYLINDER:** Silicon bronze/copper alloy
- **TUMBLERS:** Spring tempered brass. Tumblers actuated by phosphor bronze springs, six tumblers per lock
- **LOCK SIZE:** 5-1/2" L x 3-7/8" H x 1-1/2" TK
- **LOCK WEIGHT:** 7 lbs.
- **LOCKBOLT SIZE:** 2" H x 3/4" TK
- **LOCKBOLT THROW:** 3/4"
- **ASTM F1577 Certified Impact Test-Grade 1**

