

**Key:** Mogul  
**Door:** Swinging  
**Security Level:** Minimum/Medium

# D9300 ELECTRIC MAXI-MORTISE™

## Description

Series D9300 locks are pin tumbler mortise locks with an electrically-controlled knob-lockout function for swinging doors.

## Applications

An extra heavy duty mortise lock for use on swinging doors in minimum/medium security cell, or public areas of detention facilities. Available in a deadlocking latchbolt style only.

## Operation

Active knob(s) or lever handles may be locked and unlocked from a remote location. Latchbolt is retracted by either the key cylinder or active knob/lever, unless the knob/lever is locked out. Available in fail-safe or non-fail-safe operation with a variety of locking functions.

## Models

**D9341/D9345 Fail-Safe Operation:** Controlled knobs/levers unlock when power is off or in case of power failure.

**D9346/D9350 Non-Fail-Safe Operation:** Controlled knobs/levers remain locked in case of power failure.

## Standards Compliance

UL10B listed as Fire Door Accessory, 4 hour rating.

UL437 Listed Maxi-Mogul® Cylinders. Tested to over 1,000,000 operations.



Shown without LeverTrak®.

## Standard Features

- **Fits ANSI door preparation** – Standardized installation in hollow metal doors modified to accommodate lock body thickness of 1-1/8" and wiring requirements.
- **Door thickness** – Doors must be 1-3/4" to 2-1/2" thick. Specify door thickness.
- **Armored front** – 8" x 1-1/4" steel, 10 gauge.
- **High strength case and cover** – 12-gauge wrought steel, zinc chromated.
- **Corrosion-resistant working parts** – Internal working parts are stainless steel or zinc chromated steel.
- **Durable hubs** – Solid stainless steel construction, on the square.
- **Spindle** – 11/32" cold drawn steel.
- **Latchbolt** – 3/4" throw solid stainless steel.
- **Solenoid-actuated lockout** – 24VDC tubular, continuous-duty solenoid.
- **Latchbolt size** – 11/16" x 1-1/4".
- **Reversible** – Locks are field reversible. Handing should be specified upon ordering.
- **Key cylinder** – Furnished with UL437 listed, high security Maxi-Mogul® Cylinder.
- **Screws** – Tamper-resistant screws.
- **Tamper-resistance** – All bolts, including the auxiliary latchbolt, are fully tunneled to help prevent jamming of the mechanism with foreign material.
- **Strike** – Supplied with curved-lip strike having 1-1/4" lip length, and dust box (see page A38 for details). Buffed stainless steel only.
- **Finish** – US32D.
- **Maxi-Mogul® key cylinder** – Six pin tumbler high security cylinder.

For more information, please call 210.533.1231.



**Key:** Mogul  
**Door:** Swinging  
**Security Level:** Minimum/Medium

# D9300 ELECTRIC MAXI-MORTISE™

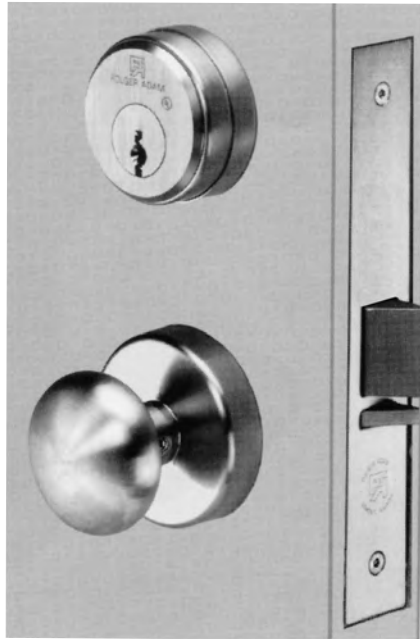
## Optional Features

- **Strike switch** – Strike-mounted indication switch for electrically monitored systems indicates whether or not the latchbolt is extended into the opening in the strike plate. The switch is supplied with a 16-gauge zinc plated steel housing.
- **Mogul cylinder** – Specify “MO” for keying locks into an existing Mogul system.
- **ASSA or Medeco Mogul cylinders are available.**
- **Indication switches** – For monitoring the position of the deadlock lever or knob/lever lock out. These switches can be used for remote door monitoring to control alarms, indication lights, interlocking, etc.  
 Specify “DIS” – Deadlock Indication Switch shows the latchbolt is deadlocked.  
 Specify “KLO” – Knob Lock Out shows locking of the active knobs.

## LeverTrak® Handle Guide Sets

- **LT & LTE** – Handle guides must be specified. The track prevents damage to mortise locks from over-travel of the handle.

- **Material** – Stainless steel.
- **Lever handles** must be installed with track.



KR – Knob handle and rose



SK – Safety knob (inside)

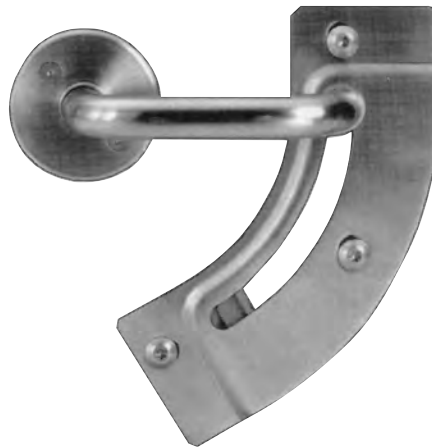
## Trim Design

### Knobs

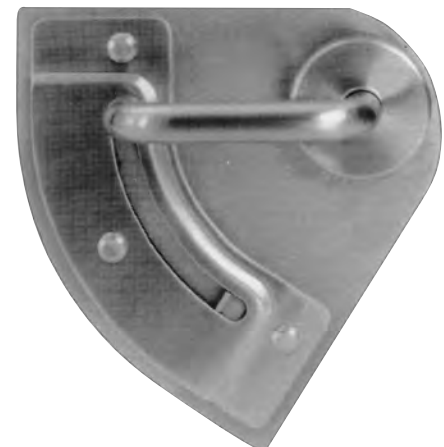
- **Specify “KR”** – For knob and rose trim with lock.
- **Material** – Stainless steel.
- **Dimensions** – 2-1/4" diameter.
- **Safety knob** – Specify “SK” knob and side installed on.
- See “How to Order” on page A38.

### Roses

- **Material** – Stainless steel.
- **Dimensions** – 2-11/16" diameter, concealed trim design.



LT – Lever handles and track set  
 The “Lemont”



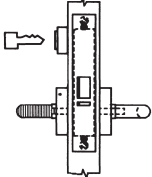
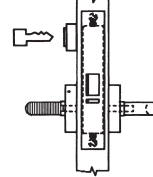
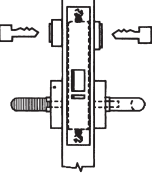
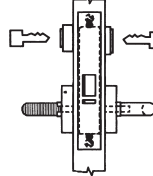
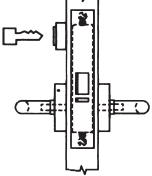
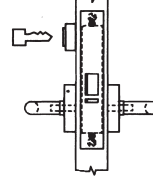
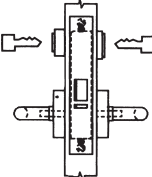
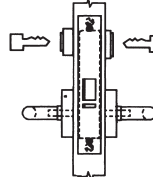
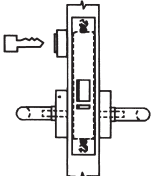
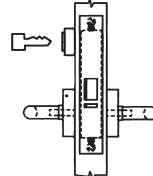
LTE – Lever handles,  
 track set and escutcheon  
 The “Limited”



P.O. Box 2021, San Antonio, TX 78297 ■ Ph: 210.533.1231 ■ Fx: 210.533.2211  
 Web: [www.SouthernFolger.com](http://www.SouthernFolger.com) ■ Email: [info@southernfolger.com](mailto:info@southernfolger.com)

**Key:** Mogul  
**Door:** Swinging  
**Security Level:** Minimum/Medium

# D9300 ELECTRIC MAXI-MORTISE™

<p>OUTSIDE INSIDE</p>  <p><b>D9341 – Fail-Safe Deadlatch</b></p> <ul style="list-style-type: none"> <li>Deadlatch operated by key outside.</li> <li>Power locks inside handle – unlocks when power is off.</li> </ul> <p>Outside handle is rigid.</p>	<p>OUTSIDE INSIDE</p>  <p><b>D9346 – Non-Fail-Safe Deadlatch</b></p> <ul style="list-style-type: none"> <li>Deadlatch operated by key outside.</li> <li>Power unlocks inside handle – locks when power is off.</li> </ul> <p>Outside handle is rigid.</p>
<p>OUTSIDE INSIDE</p>  <p><b>D9342 – Fail-Safe Deadlatch</b></p> <ul style="list-style-type: none"> <li>Deadlatch operated by key both sides.</li> <li>Power locks inside handle – unlocks when power is off.</li> </ul> <p>Outside handle is rigid.</p>	<p>OUTSIDE INSIDE</p>  <p><b>D9347 – Non-Fail-Safe Deadlatch</b></p> <ul style="list-style-type: none"> <li>Deadlatch operated by key both sides.</li> <li>Power unlocks inside handle – locks when power is off.</li> </ul> <p>Outside handle is rigid.</p>
<p>OUTSIDE INSIDE</p>  <p><b>D9343 – Fail-Safe Deadlatch</b></p> <ul style="list-style-type: none"> <li>Deadlatch operated by key outside.</li> <li>Power locks both handles – unlocks when power is off.</li> </ul>	<p>OUTSIDE INSIDE</p>  <p><b>D9348 – Non-Fail-Safe Deadlatch</b></p> <ul style="list-style-type: none"> <li>Deadlatch operated by key outside.</li> <li>Power unlocks both handles – locks when power is off.</li> </ul>
<p>OUTSIDE INSIDE</p>  <p><b>D9344 – Fail-Safe Deadlatch</b></p> <ul style="list-style-type: none"> <li>Deadlatch operated by key both sides.</li> <li>Power locks both handles – unlocks when power is off.</li> </ul>	<p>OUTSIDE INSIDE</p>  <p><b>D9349 – Non-Fail-Safe Deadlatch</b></p> <ul style="list-style-type: none"> <li>Deadlatch operated by key both sides.</li> <li>Power unlocks both handles – locks when power is off.</li> </ul>
<p>OUTSIDE INSIDE</p>  <p><b>D9345 – Fail-Safe Deadlatch</b></p> <ul style="list-style-type: none"> <li>Deadlatch operated by key outside.</li> <li>Power locks outside handle – unlocks when power is off.</li> <li>Inside handle always active.</li> </ul>	<p>OUTSIDE INSIDE</p>  <p><b>D9350 – Non-Fail-Safe Deadlatch</b></p> <ul style="list-style-type: none"> <li>Deadlatch operated by key outside.</li> <li>Power unlocks outside handle – locks when power is off.</li> <li>Inside handle always active.</li> </ul>

For more information, please call 210.533.1231.



**Key:** Mogul  
**Door:** Swinging  
**Security Level:** Minimum/Medium

# D9300 ELECTRIC MAXI-MORTISE™

## Cylinder Data

- **Maxi-Mogul® key cylinders** – D9300 Series Mortise Locks are provided with Maxi-Mogul® Key Cylinders, six pin tumbler.
  - **Cylinder collar** – An adjustable cylinder collar will be provided to suit the cylinder length and door thickness when both locks and cylinders are ordered. If not specified, rings will be for 1-3/4" thick door.
- Keys must be ordered separately.



Maxi-Mogul® Key Cylinder



Maxi-Mogul® Key

## Strikes

D9300 Series Locks are supplied with a curved lip strike having a 1-1/4" lip length, for use with doors 1-3/4" to 2" thick. Buffed stainless steel finish only.

- **Strike with indication switch** – For electrical monitoring.
- **Strike box** – Wrought steel, zinc plated, reversible for installation with flat or curved-lip strike.
- **Special lip lengths** – Strikes are installed on the same vertical centerline as the lock. 1-1/4" lip length is standard. 1-1/2" lip length is optional for doors from 2-1/8" to 2-1/2" thick.



918-D-S  
Strike switch



918-L ANSI  
Latchbolt-only  
strike  
RH/LHR shown



900-BOX  
Dust box

## How to Order

Specify

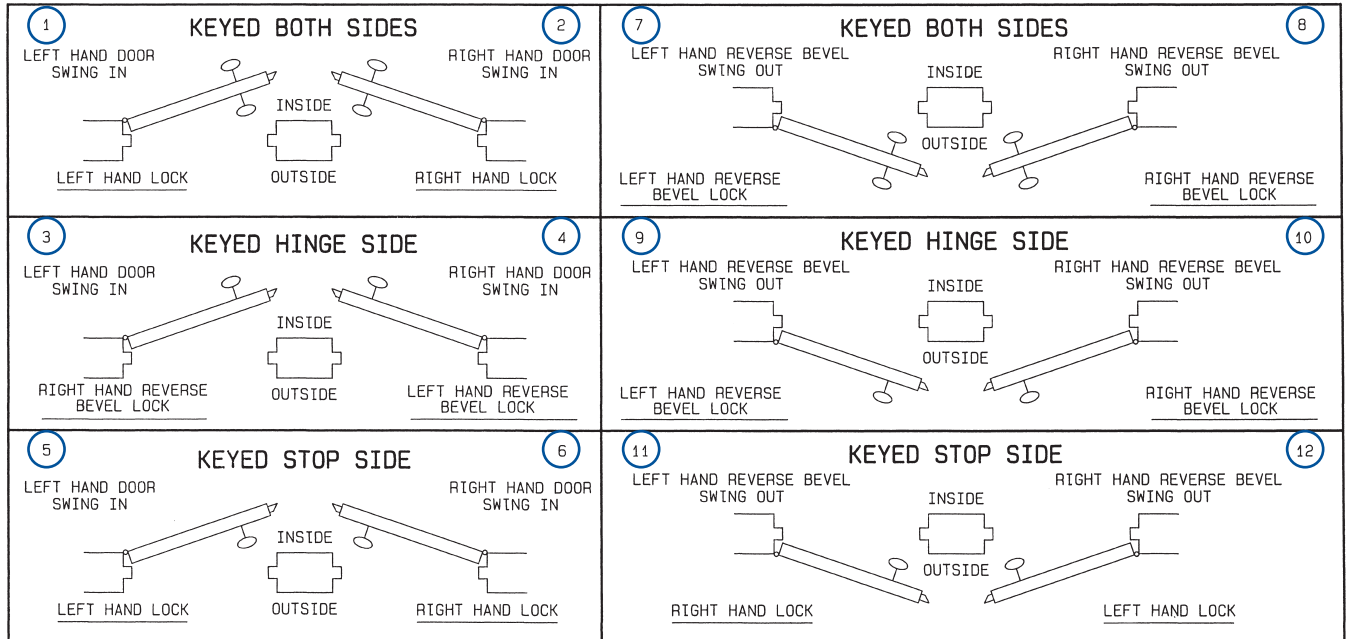
- 1) **Trim**
  - a. KR, Knob and rose set. (Safety knob available, "SK", specify side.)
  - b. LT, LeverTrak® Guide with handle and rose.
  - c. LTE, LeverTrak® Guide with handle, rose and escutcheon.
- 2) **Lock model**  
Example: D9350.
- 3) **Function** (see function descriptions).
- 4) **Handing** (RH, LH, RHR, LHR).
- 5) **Cylinder**  
(Maxi-Mogul® is standard.)
  - a. With "MO" Mogul Cylinder option.
  - b. With "ASSA" or "Medeco" Cylinder option.
- 6) **Door material/thickness.**
- 7) **Strike lip length**  
Strikes are installed 3/8" above the vertical centerline of the lock. 1-1/4" lip length is standard. 1-1/2" lip length is optional for doors from 2-1/8" to 2-1/4" maximum thickness.
- 8) **Lock switch(es)**  
DIS – Deadlock indication.  
KLO – Knob lockout indication.
- 9) **Strike switch(es)**  
S – Strike (keeper) switch.
- 10) **Finish**  
Example:  
LT-D9350 LH  
2" HM x 918-LS x US32D.  
The above is a remote unlocking entrance having free egress from the inside.






Key: Mogul  
 Door: Swinging  
 Security Level: Minimum/Medium

# D9300 ELECTRIC MAXI-MORTISE™

Specify circled swing number when ordering.



**LEGEND**

-  = INDICATES KEYED SIDE (OR SIDES)
-  = HOLLOW METAL JAMB
-  = SYMBOLIZES LATCH BOLT

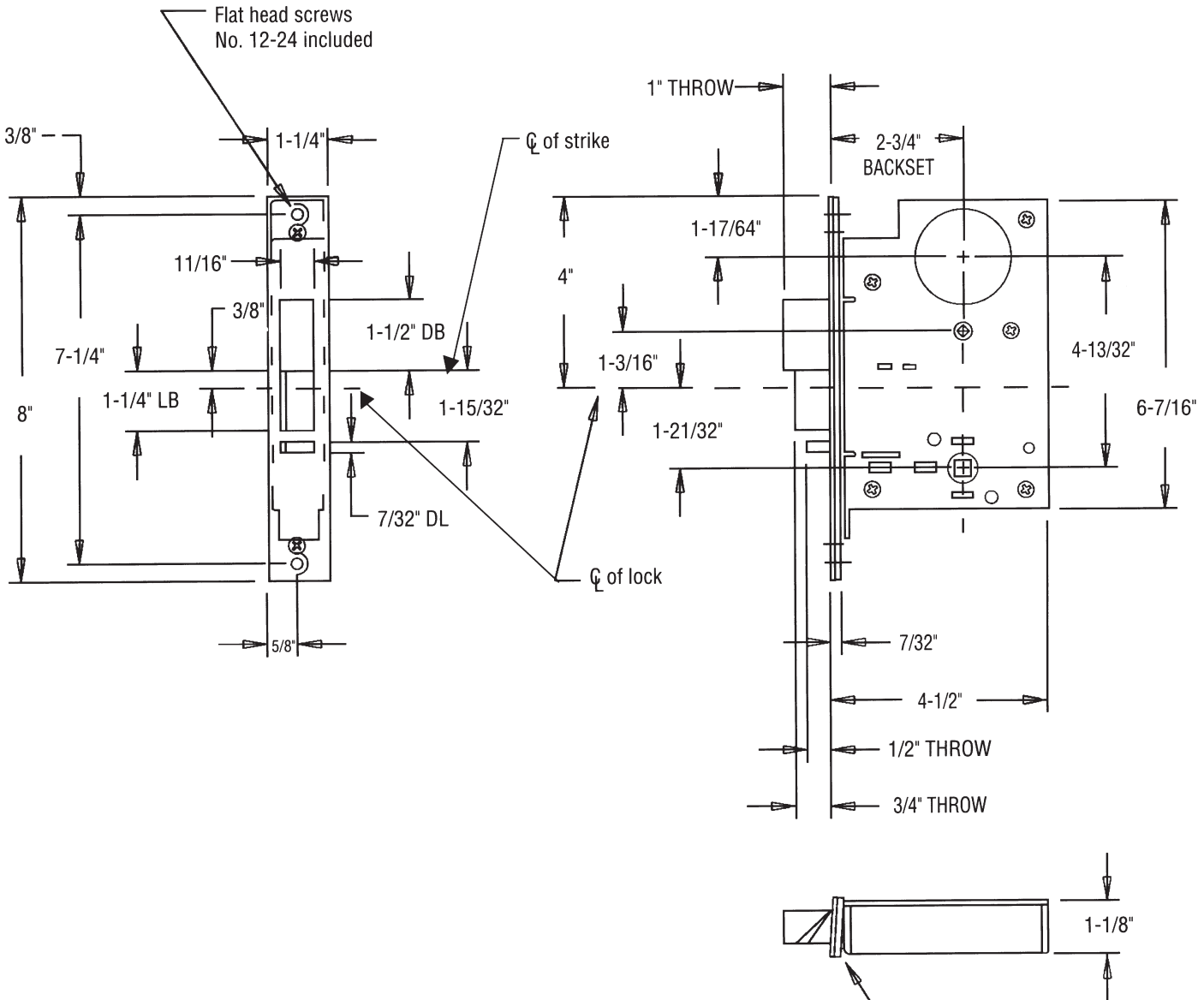
For more information, please call 210.533.1231.



# D9300 ELECTRIC MAXI-MORTISE™

## Dimensional Data

Note: Dimensions are for information and planning purposes only, and should not be used as templates.



Bevel 1/8" on 2". Shims between armor plate and lock case may be reversed to match door bevel.

