

1010A Deadlock

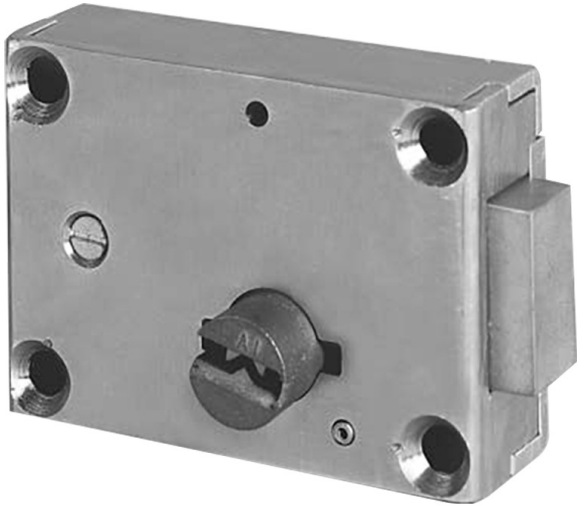


Mechanical Locks

For More information please call 210-533-1231

Mechanical Locks

1010A Deadlock



STANDARD FEATURES

- Mechanical deadlock
- Six heavy-duty tumblers
- Mounting fasteners

APPLICATION

For small swinging doors on access panels, plumbing chases, control cabinets, etc.

FUNCTION

Key activated locking and unlocking.

OPTIONAL FEATURES

EXTENDED BOLT - Used for stop side mounting. Specify "1-1/4".

HOLLOW METAL MOUNTING - Used for hollow metal door application.

Specify "HM. (See page G17) GRATING DOOR MOUNTING -

Used for grating door application. Specify "G."

PLATE DOOR MOUNTING - Used for steel plate door application. Specify "P."

BOLT KEEPER OPTIONS - (Must be specified separately):

4C - Bolt keeper with dustbox

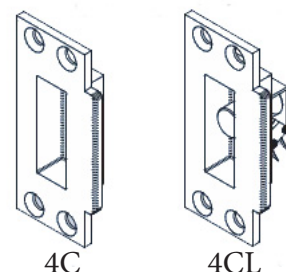
4CL - Bolt keeper with switch

NOTE: All bolt keepers are supplied with security fasteners.

NOTE: All bolt keepers are supplied with security fasteners.

1010A-1: KEYED ONE SIDE
1010A-2: KEYED BOTH SIDES

BOLT KEEPERS



4C

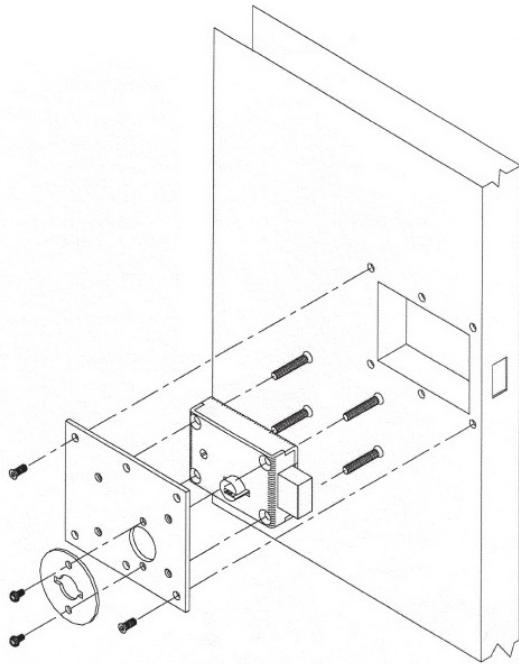
4CL

For More information please call 210-533-1231



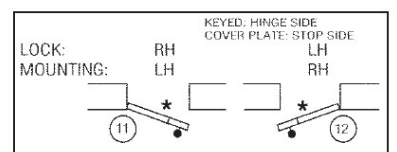
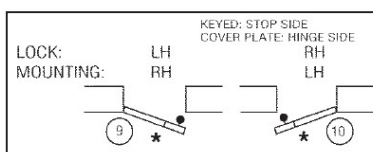
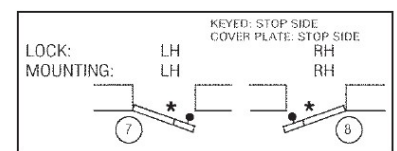
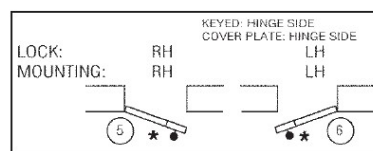
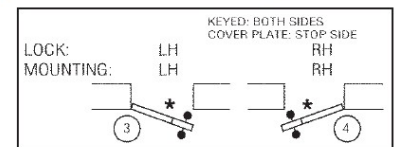
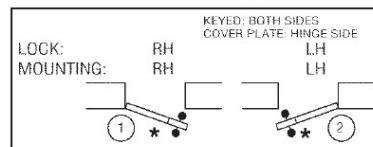
Mechanical Locks

1010A Deadlock



HM Mounting Shown

Swing Chart: Specify circled swing number when ordering.



* Indicates lock mounting/access plate side.

TECHNICAL DATA

Standard Finish	Galvanized
Cover	Steel
Case	Steel
Latchbolt	Steel
Paracentric Cylinder	Silicon bronze/copper alloy
Tumbler	tumblers per lock
Lock Size	4.4" L x 3.15" H x 1.35" TK
Lock Weight	4.5 lbs
Latchbolt Size	1-1/2" H x 3/4" TK
Latchbolt Throw	5/8"

Astm F 1577 Certified Impact Test-Grade1

For More information please call 210-533-1231

