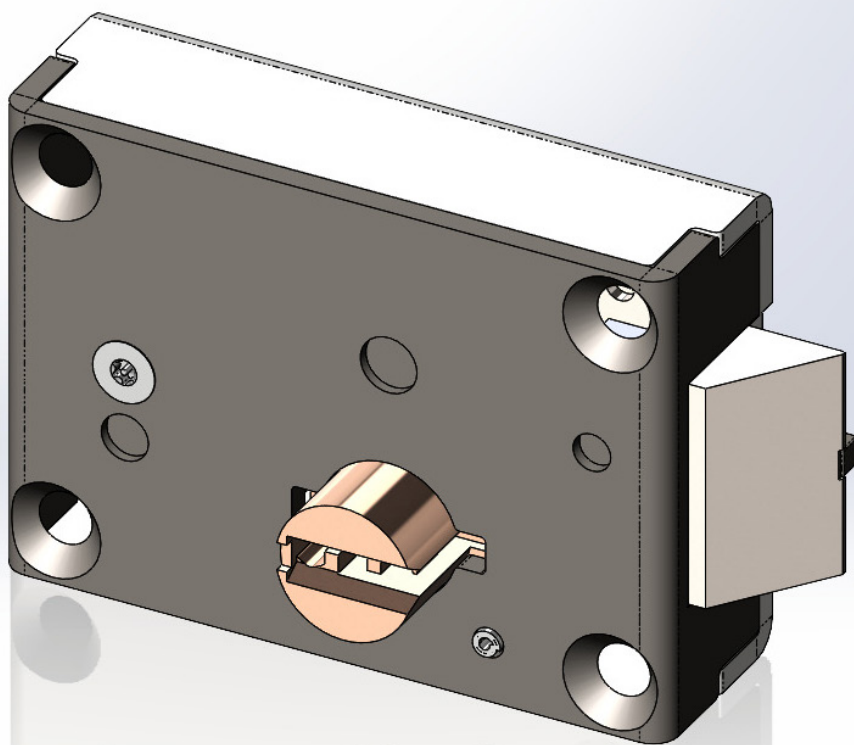


1017AD Snaplatch



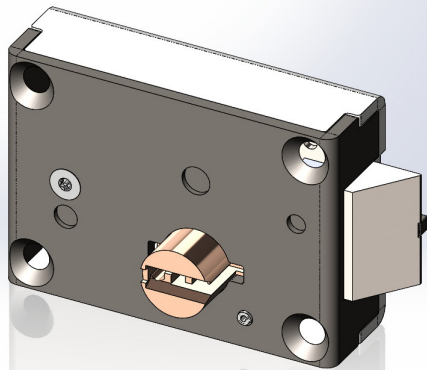
Mechanical Locks



For More information please call 210-533-1231

Mechanical Locks

1017AD Snaplatch



STANDARD FEATURES

- Automatic snaplatch
- Six heavy-duty tumblers
- Mounting fasteners

APPLICATION

For food passes, observation, shutters, and other small swinging doors where Snaplatching is desired. In a detention facility, these locks are suitable for securing utility access doors and small indoor shutters, such as a food pass. Commercial building application possibilities are numerous and include the locking of all types of panels that provide access to mechanical spaces.

FUNCTION

Key activated unlatching. Snaplatches upon closing. Automatic deadlocking latch affording the convenience of “slam” locking

OPTIONAL FEATURES

EXTENDED BOLT - Used for hollow metal door mounting. Specify “1 inch”.

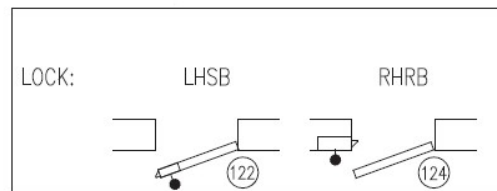
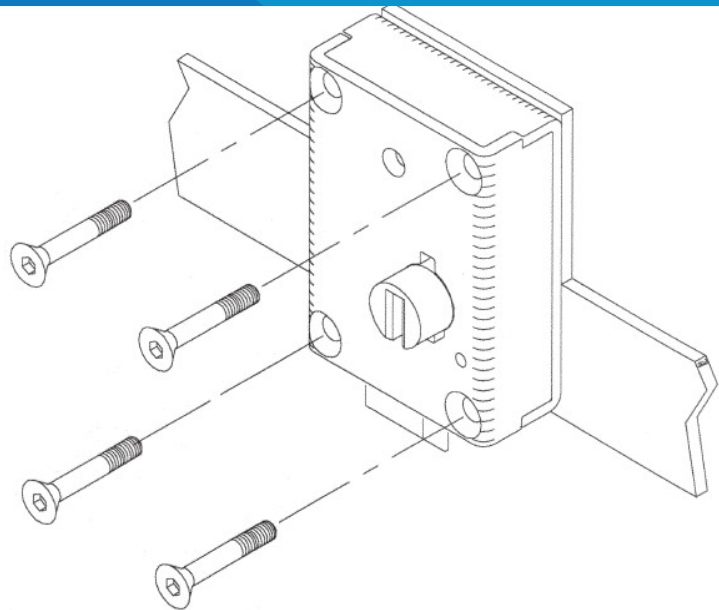
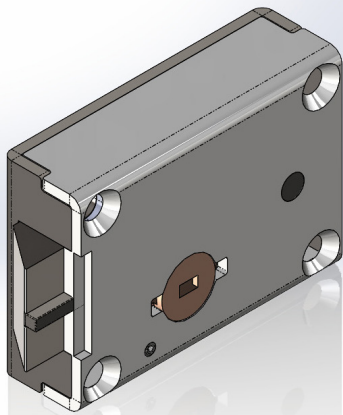
1017A-1: KEYED ONE SIDE



For More information please call 210-533-1231

Mechanical Locks

1017AD Snaplatch



TECHNICAL DATA

Standard Finish	Galvanized
Cover	Steel
Case	Steel
Lockbolt	Steel
Paracentric Cylinder	Silicon bronze/ copper alloy
Tumblers	6 tumblers per lock
Lock Size	4.4" L x 3.15" H x 1.35" TK
Lock Weight	3 lbs
Lockbolt Size	1-1/2" H x 3/4" TK
Latchbolt	5/8" extended 1/2" travel

For More information please call 210-533-1231

