



4110L Electric Locking System



Locking Systems



For More information please call 210-533-1231

Locking Systems

4110L Electric Locking System



For use where remote electric unlocking of groups of sliding doors is required, but door movement can be by hand at the door. This system also provides emergency mechanical unlocking from a control cabinet at the head of the door line. Doors are locked at top and bottom in both the open and closed positions by means of a concealed vertical lock bar at the rear jamb of each door. The vertical lock bar is deadlocked at a third locking point inside the horizontal cover box above the door. Standard clear door opening widths available are 2'4" to 3'2".

FUNCTION

ELECTRIC - Individual switches located on a remote control panel operate an electric motor housed in the horizontal cover box over each door, raising the vertical lock bar and unlocking the door. Upon unlocking, the door springs open a few inches. All door movement is by hand at the door, which automatically snap/deadlocks when moved to the fully closed or fully open position. Individual lamp indicators on the control panel show locked/unlocked condition. A single switch can provide group unlocking.

MECHANICAL - In the absence of electrical power, doors may be individually unlocked with a manual release tool. Door movement is by hand and door will relock in either fully open or closed position.

EMERGENCY GANG RELEASE - In an emergency, all doors in a cell line may be simultaneously unlocked from a mechanical release cabinet at the end of the cell line. While in emergency release mode, doors will not relock in any position.

STANDARD FEATURES

- Bottom door guide
- Door hanger
- Mechanical release cabinet
- Sloped-front cover box
- Hinged cover panel for maintenance access
- Vertical lock bar assembly
- ASTM F1643 Certified Horizontal and Vertical Impact Test-Grade 1
- Prime paint finish

OPTIONAL FEATURES

PILASTER RELEASE – (In lieu of mechanical release cabinet.) Hip-high paracentric keyed mechanical release mounted in a full-height pilaster adjacent to the receiving jamb. Specify “4110LP-1” keyed one side.

ELECTRIC KEYSWITCH – Paracentric or mogul keyed local electric control switch mounted below mechanical release mechanism in pilaster. Specify “4110LPK-1” for paracentric keyed one side. Specify “4110LPKM-1” for mogul keyed one side.

ELECTRIC HALF CYCLE – Door will not lock in any position until it receives relock signal. This function requires the use of a three position switch. Specify “D.”

HOT DIP GALVANIZED FINISH - Available for external applications with lift-off cover panel only. Not available with standard hinged cover panel. Specify “G” when ordering. Example: 4110LP-1G

REMOTE PANEL LOCK SYSTEM - Remote panel option is available with lift-off cover panel only. Not available with standard hinged cover panel. Specify “RP” when ordering. Example: 4110LRP

NO LOCK OPEN - Specify “NLO.” Door does not lock in open position.

MOTOR – Specify “24 VDC.” inrush: 1.1A Locked Rotor Current: 3.4A

FACTORY WIRED CONTROL CABLE Specify “4110LWC.”



For More information please call 210-533-1231

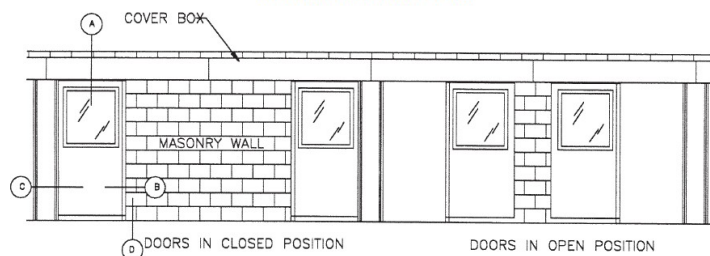
Locking Systems

4110L Electric Locking System

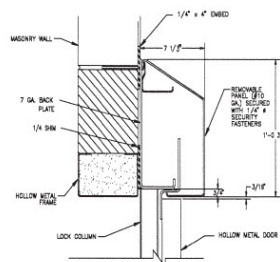
DOOR SCHEDULE				
Door Height	Clear Opening	Frame Opening	Cover Box	Door Width
	3' - 0"	3' - 7"	7' - 4"	3' - 2 1/2"
	3' - 2"	3' - 9"	7' - 8"	3' - 4 1/2"
	3' - 4"	3' - 11"	8' - 0"	3' - 6 1/2"
	3' - 6"	4' - 1"	8' - 4"	3' - 8 1/2"
	3' - 8"	4' - 3"	8' - 8"	3' - 10 1/2"
	4' - 0"	4' - 7"	9' - 4"	4' - 2 1/2"
	4' - 4"	4' - 11"	10' - 0"	4' - 6 1/2"
	4' - 6"	5' - 1"	10' - 4"	4' - 8 1/2"

NOTE: Cover box minimum length = (7" overtravel) + (2 x clear opening) + 9". For doors exceeding 300 lbs. and/or greater than 3'-2" clear opening, contact factory.

4110L SLIDING DOOR SYSTEM

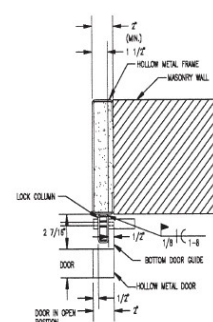


DETAIL A - SLOPED BOX

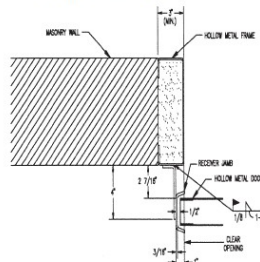


COVER BOX SECTION
7-1/8" deep x 1" - 0-3/4" tall
cover box field welded 1" on 8"
top and bottom.

DETAIL B - VERTICAL LOCK JAMB BAR

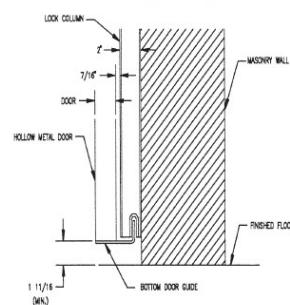


DETAIL C - RECEIVER



RECEIVER JAMB SECTION
Flush receiver jamb allows frame
opening and clear opening to
be the same.

DETAIL D - BOTTOM DOOR GUIDE SECTION



4110L Shown

Note: Other system configurations and details are available.
Call Customer Service for more information.

TECHNICAL DATA

Cover Box	1' 0 - 3/4' H x 7 - 1/2' D
Cover Box Material	7 gauge steel plate
Hinged Panel	10 gauge steel
Door Rollers	3" diameter, with sealed bearing
Vertical Lock Bar Dimensions	5/8" SQ by full height of door
Finish	Prime paint
Door Hanger	7 gauge steel plate
Locked Rotor Current	3.1A
Electrical	Motor: 1/8 HP, 115 VAC, 60 Hz., single phase power Inrush: 1.1A Running: .9A
Wire Requirements	When electric operation of the door is from a remote station, a minimum of five conductors (minimum 14 gauge) are required between the control point and the door, except for those models having the letter "K" (keyswitch) in the suffix. Keyswitch models require minimum six conductors

For More information please call 210-533-1231

