



8050L Locking System



Locking Systems

For More information please call 210-533-1231



Locking Systems

8050L Locking System



The 8050L Locking System offers complete selective electric operation of sliding doors in a line or group from a remote control station. Doors are operated by pneumatic cylinders over each door. This system also provides emergency pneumatic unlocking from a remote location. Doors are locked at top and bottom in both the open and closed positions by means of a concealed vertical lock bar at the rear jamb of each door. The vertical lock bar is deadlocked at a third locking point inside the horizontal cover box above the door. Standard clear door opening widths are from 2'4" to 3'2".

FUNCTION

ELECTRIC - A remote switch activates pneumatic cylinders which raise a vertical lock bar and propel

the door open or closed. Individual lamp indicators on the control panel show locked/unlocked condition. A single switch can provide group unlocking.

MECHANICAL - In the absence of pneumatic or electrical power, doors may be individually unlocked with a manual release tool. Door movement is by hand and door will relock in either fully open or closed position.

EMERGENCY GANG RELEASE - In an emergency, all doors in a cell line may be simultaneously unlocked from a remote location using a pneumatic release system. While in emergency release mode, doors will not relock in any position.

STANDARD FEATURES

- Bottom door guide
- Door hanger
- Pneumatic emergency release
- Sloped-front cover box
- Hinged cover panel for maintenance access
- Vertical lock bar assembly
- ASTM F1643 Certified Horizontal and Vertical Impact Test-Grade 1
- Prime paint finish

OPTIONAL FEATURES

PILASTER RELEASE – (In lieu of pneumatic release system.) Hip-high paracentric keyed mechanical release mounted in a full-height pilaster adjacent to the receiving jamb. Specify “8050LP-1” keyed one side.

ELECTRIC KEYSWITCH – Paracentric or mogul keyed local electric control switch mounted below mechanical release mechanism in pilaster. Specify “8050LPK-1” for paracentric keyed one side. Specify “8050LPKM-1” for mogul keyed one side.

HOT DIP GALVANIZED FINISH - Available for external applications with lift-off cover panel only. Not available with standard hinged cover panel. Specify “G” when ordering. Example: 8050LP-1G

FACTORY-WIRED CONTROL CABLE
Specify “8050LWC.”



For More information please call 210-533-1231

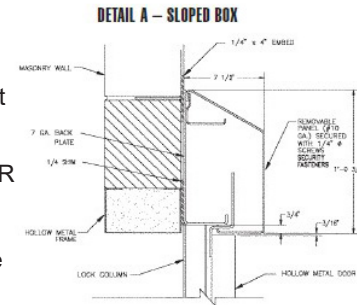
Locking Systems

8050L Locking System

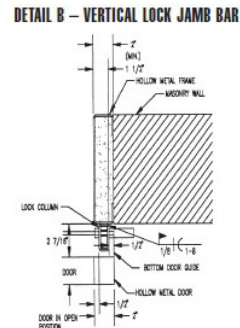
DOOR SCHEDULE				
Door Height	Clear Opening	Frame Opening	Cover Box	Door Width
8' - 0" Maximum	2' - 4"	2' - 4"	6' - 0"	2' - 6 1/2"
	2' - 6"	2' - 6"	6' - 4"	2' - 8 1/2"
	2' - 8"	2' - 8"	6' - 8"	2' - 10 1/2"
	3' - 0"	3' - 0"	7' - 4"	3' - 2 1/2"
	3' - 2"	3' - 2"	7' - 8"	3' - 4 1/2"

NOTE: Cover box minimum length = (7" overtravel) + (2 x clear opening) + 9". For doors exceeding 300 lbs. and/or greater than 3'-2" clear opening, contact factory.

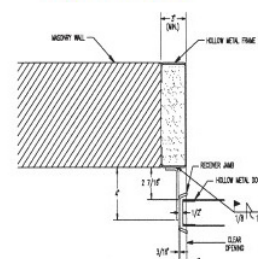
THREE HOUR FIRE DOOR RATING AVAILABLE. Standard cover box calculation does not apply to fire rated doors.



COVER BOX SECTION
7-1/2" deep x 1'-0-3/4" tall cover box field welded 1" on 6" top and bottom

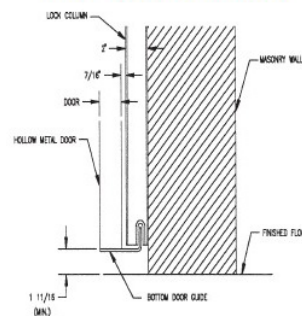


DETAIL C - RECEIVER

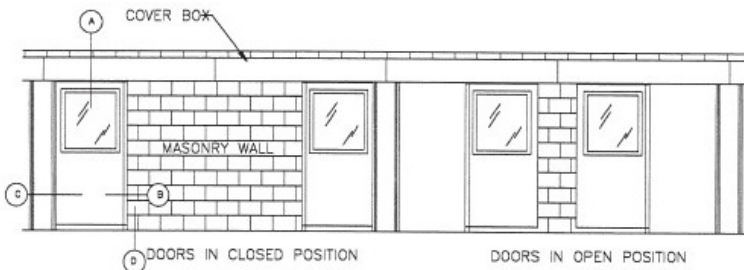


RECEIVER JAMB SECTION
Flush receiver jamb allows frame opening and clear opening to be the same.

DETAIL D - BOTTOM DOOR GUIDE SECTION



8050L PNEUMATIC SLIDING DOOR SYSTEM



TECHNICAL DATA

Cover Box	1' 0 - 3/4" H x 7 - 1/2" D
Cover Box Material	7 gauge steel plate
Hinged Panel	10 gauge steel
Door Rollers	3" diameter, machined steel with sealed bearings.
Vertical Lock Bar Dimensions	5/8" SQ by full height of door
Finish	Prime Paint
Door Hanger	7 gauge steel plate
Electrical	24 VDC Minimum of 5 24 volt conductors required between the control point and the door, except for those models have the latter "k" (keyswitch) in the suffix. Keyswitch models require minimum six conductors.
Air Requirements	Air consumption 44 cubic inches per operation. Supply pressure: 80 PSIG

For More information please call 210-533-1231

